



CHILLI



OUR STORY



THIS IS US

Chilli Pro Scooter stands for absolute passion and 100% support for the stunt scooter sport. Founded in 2010, with the goal of developing a high-end stunt scooter line-up for all ages and skill levels, we now offer everything from kids' stunt scooters to professional models. According our motto «scooters from riders for riders» we research, develop, test and design day in, day out in cooperation with our Chilli Pro and Flow riders to build the best stunt scooters for you.

CONTENT

7 STUNT SCOOTER DICTIONARY

14 YOUNGSTER SERIES

22 ALLSTAR SERIES

40 RIDERS CHOICE SERIES

49 PARTS



STUNT SCOOTER DICTIONARY





STREET SCOOTER

Street scooters are generally **larger, heavier and have a wider deck**. They are particularly suitable for riders who are often on the road and **grind on ledges or rails**. The long, wide deck offers more stability and space for the feet and the rectangular shape allows easier 50-50's and other street tricks.

VS

PARK SCOOTER

Park scooters on the other hand have a **compact, lightweight deck** and a **shorter T-bar**. They are better suited for more complicated tricks in parks such as combinations of **whips and barspins or briflips**.





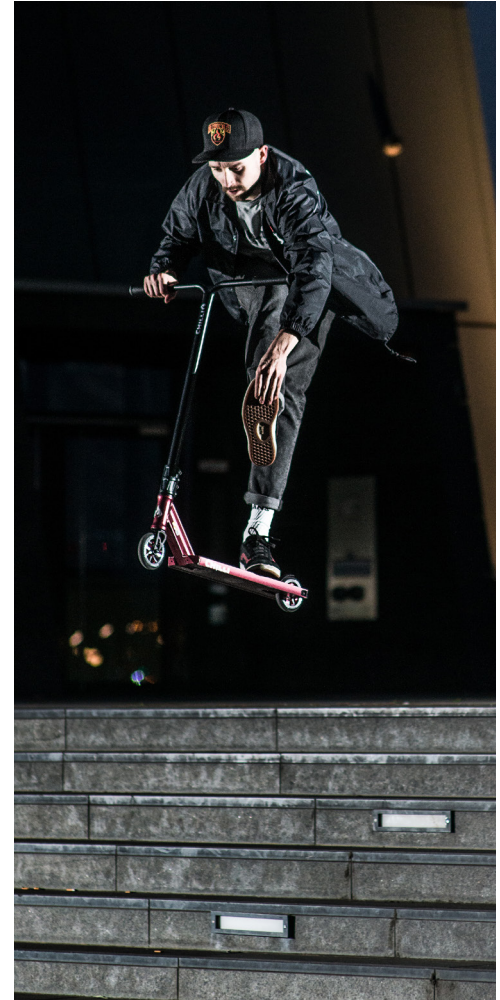
The chrome-molybdenum alloy is ideal for every rider level. This alloy is characterised by a very **high stability**.



For most riders, the steel bar is the best choice. It is very **robust, durable** and can even **withstand bad landings**.



The aluminium bar is very **light** and is therefore often used for children's scooters. Taller Riders should only use this T-bar if they have the necessary experience, as this bar can bend during a bad landing.



100 MM vs 110 MM vs 120 MM WHEELS

Wheels with a diameter of 100 mm, 110 mm or 120 mm are usually used in stunt scooters. The **width is always 24 mm**, so that the wheels fit into all common forks. **The bigger** the wheels are, **the faster** they are, but this also affects the weight.

Important: The suitable wheel size depends on the fork and brake used, **not all wheels fit on all scooters.**



ABEC 7 vs ABEC 9 BEARINGS

Ball bearings ensure that the wheels rotate smoothly. The running speed of ball bearings is given in ABEC. **The higher the number behind the unit, the higher the quality and faster the ball bearing.** For stunt scooters, a distinction is usually made between ABEC 7 and ABEC 9 ball bearings. Cheap stunt scooters often have only ABEC 5.

As a **premium brand**, Chilli uses **only ABEC 9 in all stunt scooters** to ensure optimal riding characteristics.





CHILLI COMPRESSION SYSTEMS

Chilli Scooters are equipped with either an **SCS or HIC compression system**. Compression systems connect the bar to the fork and deck. Stunt scooters use special compression systems to **withstand the high loads**. In addition, compression systems **minimize bar wobble** and thus enable easier barspins and tailwhips.

Even if some riders prefer one or the other system, they both **serve the same purpose**. So in the end it is a matter of taste which compression system you choose.

SCS

With the SCS Compression System (Standard Compression System) the **clamp** is placed on a fork and inside the clamp the screw is tightened from above.



SPIDER HIC/ HIC

HIC systems (Hidden internal Compression) are almost standard on Chilli Scooters. A HIC shim is placed on a HIC fork and a screw is screwed in from above. The only difference between the classic HIC and a Chilli Spider HIC is that the **shim looks like a spider**, hence its name.







CHILLI 

CATEGORY

YOUNGSTER

3000 - Red/Black
110-4



3000 - Green/Black
110-5



3000 - Blue/Black
110-6



3000 - Black/Pink
110-10



3000 - Black/Gold
110-9



14

CHILLI 3000 | THE ENTRY-LEVEL MODEL FOR THE YOUNGEST



 48 x 48 cm

 100 mm

 11.5 x 45 cm

 3.1 kg

★ 7/10

PARK

★ 5/10

STREET

CATEGORY

YOUNGSTER



4000 - Blue
104-01



4000 - Sea
104-04

16

CHILLI 4000 | THE ENTRY LEVEL STUNT SCOOTER FOR BUDDING PROS



53 × 50 cm



110 mm



11.5 × 50 cm



3.4 kg

★ 7/10



PARK

★ 5/10



STREET

CATEGORY

YOUNGSTER



Base S - Blue
108-02



Base S - Green
108-01



Base S - Red
108-03

18

CHILLI BASE S | THE PERFECT BEGINNER STUNT SCOOTER FOR THE LITTLE ONES



56 × 55 cm



110 mm



11.5 × 47 cm



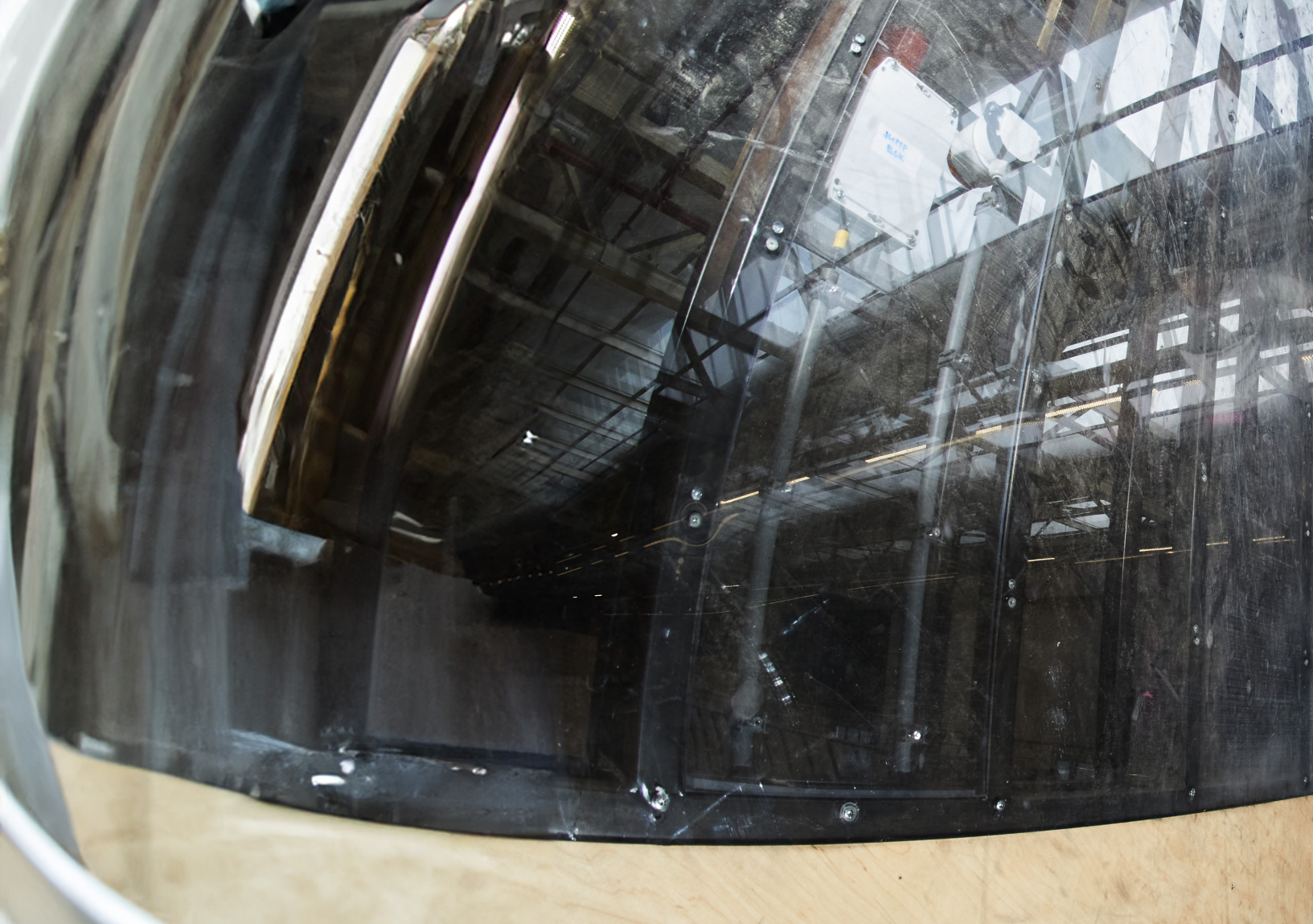
3.55 kg

★ 7/10



★ 6/10







CATEGORY

ALLSTAR

Base - Black/White
118-1



Base - Black/Blue
118-3



Base - Black/Orange
118-2



Base - Black/Green
118-4







Base - Black/Pink
118-5



22

CHILLI BASE | THE PERFECT ENTRY-LEVEL SCOOTER

-  58 × 56 cm
-  110 mm
-  11.5 × 50 cm
-  3.65 kg



★ 7/10

PARK

★ 6/10

STREET

CATEGORY

ALLSTAR



Rocky - Matt Neochrome
118-22



Rocky - Neochrome
118-6

24

CHILLI ROCKY | THE ENTRY LEVEL SCOOTER WITH A UNIQUE LOOK



58 × 56 cm



110 mm



11.5 × 50 cm



3.65 kg

★ 7/10



★ 6/10



CATEGORY

ALLSTAR

Rocky Vol. 3 - Blue neochrome
118-21



Rocky Vol. 2 - Black neochrome
118-20



26

CHILLI ROCKY VOL 2-3

THE ENTRY-LEVEL STUNT SCOOTER FOR NEOCHROME GEEKS



58 × 56 cm



110 mm



11.5 × 50 cm



3.65 kg

★ 7/10



★ 6/10



CATEGORY

ALLSTAR



5000 - Black/Neochrome
102-38

5000 - Grey/Black
102-47

5000 - Black/Blue
102-45

5000 - Greenery
102-8

5000 - Black/Red
102-46

5000 - Blackky
102-7

CHILLI 5000 | THE PERFECT MODEL FOR YOUNG RIDERS WITH HIGH AMBITIONS



60 × 50 cm



110 mm



11.5 × 50 cm



3.6 kg

★ 7/10

PARK

★ 5/10

STREET

CATEGORY

ALLSTAR

Reaper - Ice
112-3



Reaper - Grim
112-1



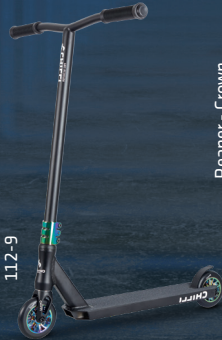
Reaper - Fire
112-2



Reaper - Sun
112-4



Reaper - Grim Neochrome
112-9



Reaper - Crown
112-12



Reaper - Ocean
112-11



Reaper - Gold
112-13



Reaper - Wave
112-5



30

CHILLI REAPER | THE MOST POPULAR SCOOTER WITH OUR CHILLI RIDER TEAM



58 × 58 cm



110 mm

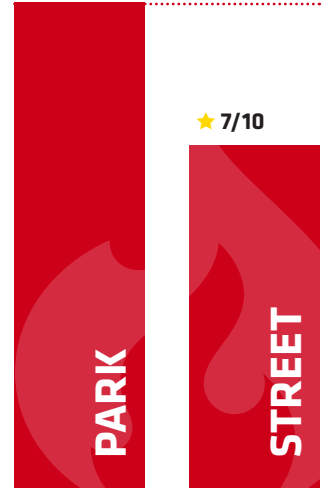


11.5 × 50 cm



3.8 kg

★ 10/10



★ 7/10

PARK

STREET

CATEGORY

ALLSTAR



Critter - Hercules Beetle
113-01



Critter - Chameleon
113-02



Critter - Octopus
113-03

32

CHILLI CRITTER | BREAKING BOUNDARIES WITH UNIQUE ABILITIES



64 x 58 cm



110 mm



11.5 x 50 cm



3.8 kg

★ 9/10



★ 8/10



CATEGORY

ALLSTAR



Chilli Pro Scooter Ventus M - Black/White
122-01

34

CHILLI VENTUS M | MAXIMUM AIRTIME OPTIMIZATION



58 × 56 cm



110 mm

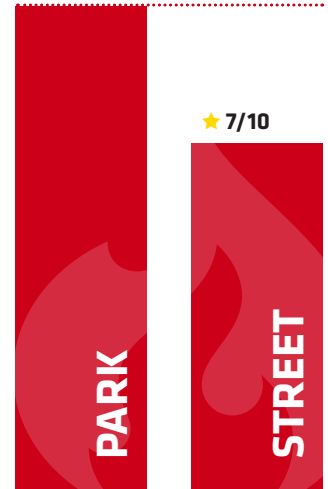


11.5 × 48 cm



2.95 kg

★ 10/10



★ 7/10

PARK

STREET

CATEGORY

ALLSTAR

Chilli Pro Scooter Ventus L - White/Black
122-02



36

CHILLI VENTUS L | MAXIMUM AIRTIME OPTIMIZATION



67 x 56 cm



110 mm



11.5 x 50 cm



3.1 kg

★ 10/10



★ 7/10



CATEGORY

ALLSTAR



Reaper Realoaded V2 - Green
117-21



Reaper Realoaded V2 - Blue
117-22



Reaper Realoaded V2 - Neochrome
117-23

38

CHILLI REAPER RELOADED V2

HIGH-END STREET SCOOTER FOR EXPERIENCED RIDERS



60 × 60 cm



120 mm



12.5 × 50 cm



3.8 kg

★ 9/10



PARK

★ 9/10



STREET

CATEGORY

ALLSTAR

Reaper Reloaded V2 - Poker
117-24



40

CHILLI REAPER RELOADED V2

POKERFACED LIMITED EDITION REAPER RELOADED V2
WITH HYBRID COMPONENTS



60 × 60 cm



120 mm



12.5 × 50 cm



3.8 kg

★ 9/10



★ 9/10



CATEGORY

ALLSTAR



Chillii Pro Scooter Trooper - Green Matt/Black
145-01

42

CHILLI TROOPER | ALL IN ONE - STUNT AND CITY SCOOTER



63 x 58 cm



145 mm



12.5 x 53 cm



4.35 kg

★ 8/10



★ 7/10





Jer



CATEGORY

RIDERS CHOICE



ZERO V2 - Polished
114-6

46

CHILLI ZERO V2 | THE NEXT GENERATION PRO ALUMINIUM SCOOTER



61 × 58 cm



120 mm



12.5 × 52 cm



3.6 kg

★ 10/10

★ 6/10

PARK

STREET

CATEGORY

RIDERS CHOICE

Beast V2 - Black/Neochrome
119-01



48

CHILLI BEAST V2 | A PIECE OF ART IN THE HIGH-END RANGE OF CHILLI PRO SCOOTER



61 × 58 cm



110 mm

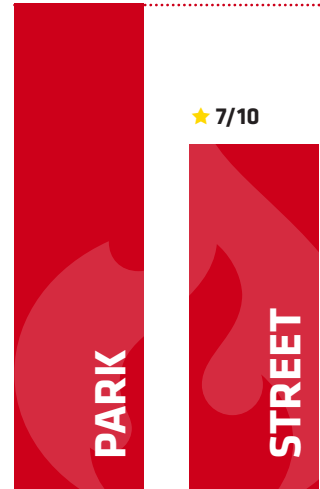


11.5 × 50 cm



3.5 kg

★ 10/10



★ 7/10

CATEGORY

RIDERS CHOICE

Archie Cole - White
121-02



Archie Cole - Black
121-01



50

CHILLI ARCHIE COLE | DESIGNED BY ARCHIE COLE



61 × 58 cm



110 mm



11.5 × 50 cm



3.44 kg

★ 10/10



PARK

★ 7/10



STREET





CHILLI PRO PARTS

WHEELS



3000 Series
100 mm
CEW0032



Base (S) and Rocky Series
110 mm transparent
CEW0039



Critter Series
110 mm
CEW0053



Base (S) and Rocky Series
110 mm neochrome
CEW0042



Reaper Series
110 mm
CEW0022



Turbo and Beast Series
110 mm
C-1034-BB



Reaper Reloaded V2 Series
120 mm
CEW0046



Hollow Core Series
120 mm
CEW0006

GRIPS



Handle Grips
3000 to 5000 Series
CSH9008



Handle Grips
XL
505-12



Handle Grips
Standard 2.0
CSH9005

T-BAR



3000 to 5000 Series
CrMo
CET0003



Reaper Series
Steel
1038-11



Pro Series
Aluminium oversized
CET0002



Reaper Reloaded V2 Series
CrMo
CET0028



Reaper Reloaded V2 Series
CrMo
CET0031

DECKS



Critter
CED0052



Beast V2
CED0006



Archie Cole
CED0004



5000
CED0015

GRIP TAPE



Archie Cole Griptape
CEG0015



Critter Griptape
CEG0025

PEGS



Peg Barrel
C-1033-GO



Peg Barrel
C-1033-S

BRAKES



100 mm Flex Brake
C-1042-B



110 mm Flex Brake
C-1043-B



120 mm Flex Brake
C-1044-B

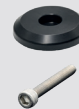
COMPRESSION SYSTEM



Spider HIC
C-1035-B

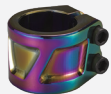


HIC
CS00016

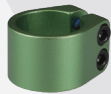


SCS
CS00034

CLAMPS



3000 to 5000 Series
Spider HIC
CEC0014



Base (S) and Rocky Series
HIC
CEC0005



Reaper Series
Spider HIC
CEC0023



Archie Cole Series
Spider HIC oversized
CEC0007



Street Series
SCS
CEC0040

HEADSETS



3000 to 5000 Series
CEH0002



Reaper Series
C-1037-RB

FORKS



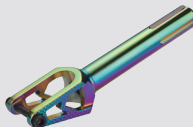
3000 to 5000 Series
Spider HIC
CEF0004



Base (S) and Rocky Series
HIC
CEF0001



Reaper Series
Spider HIC
CEF0010



Reaper Reloaded Series
Spider HIC
CEF0025



Critter Series
Spider HIC
CEF0030

All products are available in other colours



www.chilli-proscooter.com

55



@ChilliProScooters



@chilliproscooter



@chilliscootersglobal



www.chilli-proscooter.com

